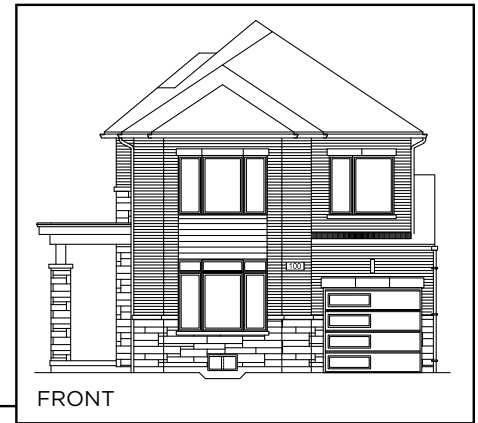


THE POPPY (30-04)



ELEVATION A



ELEVATION B



ELEVATION A
2155
SQUARE FEET

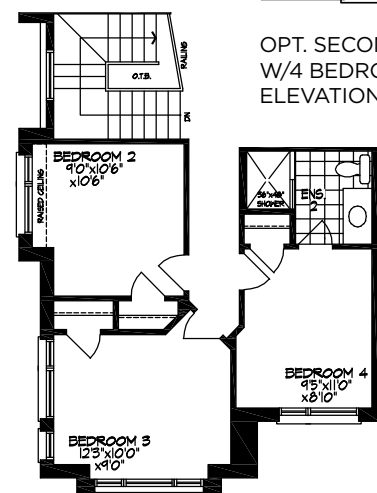
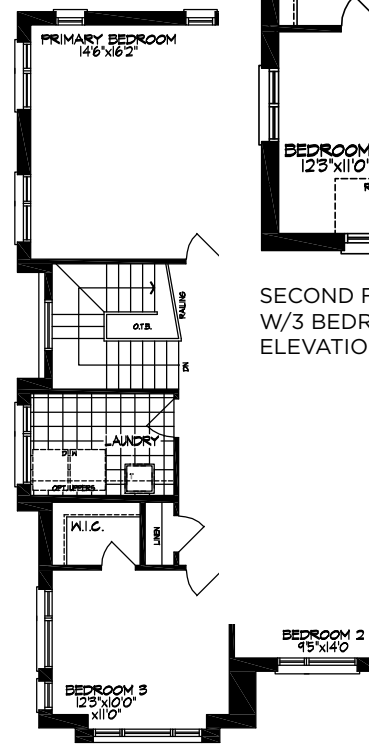
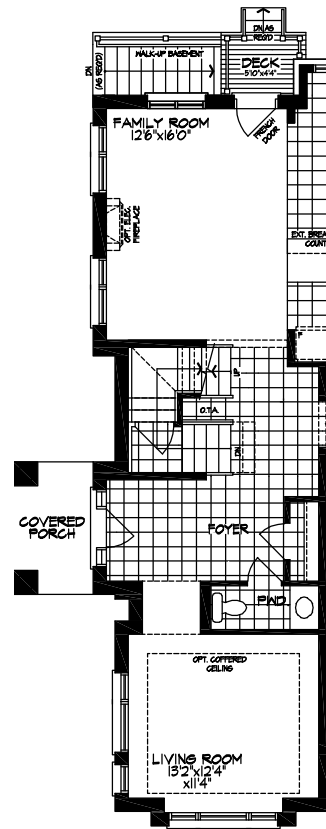
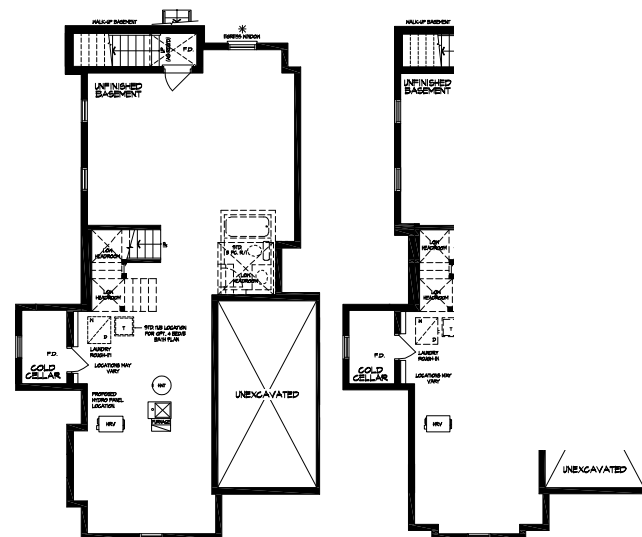
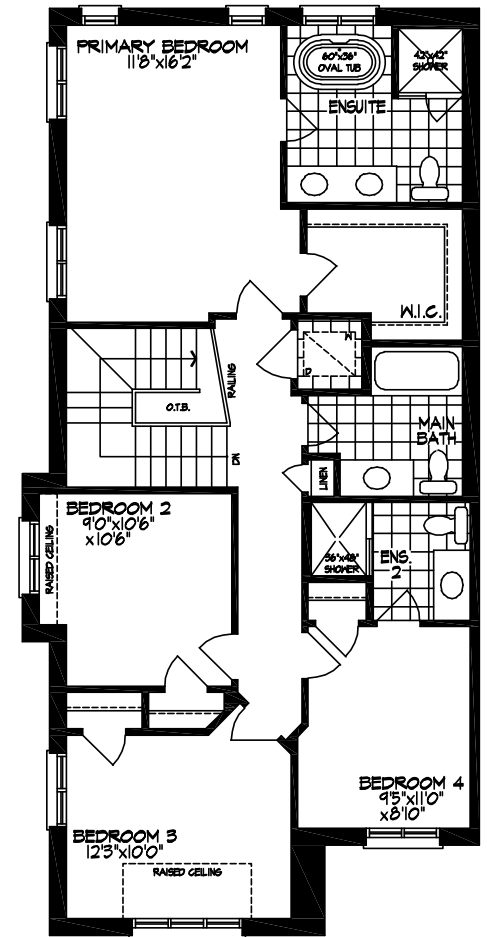
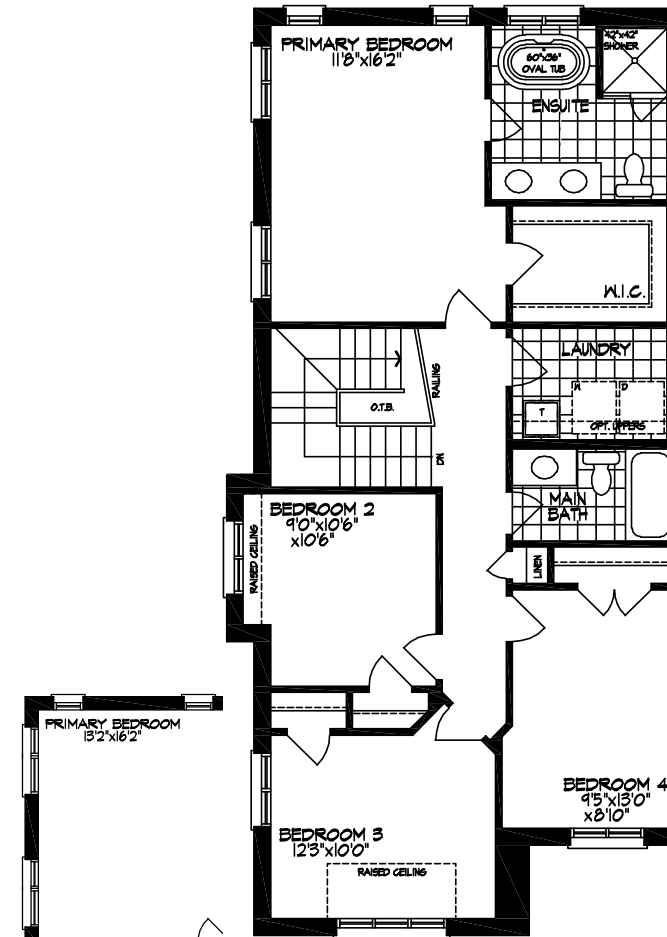
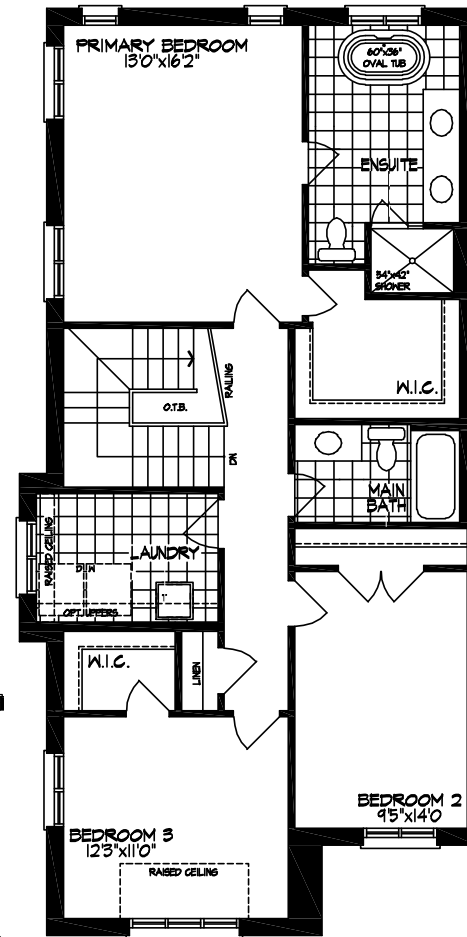
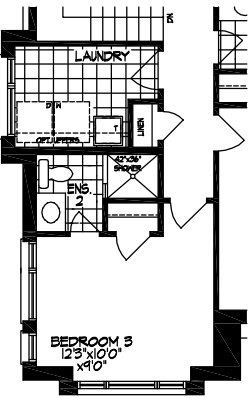
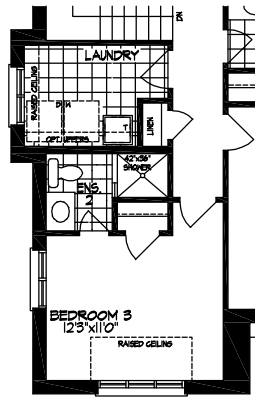
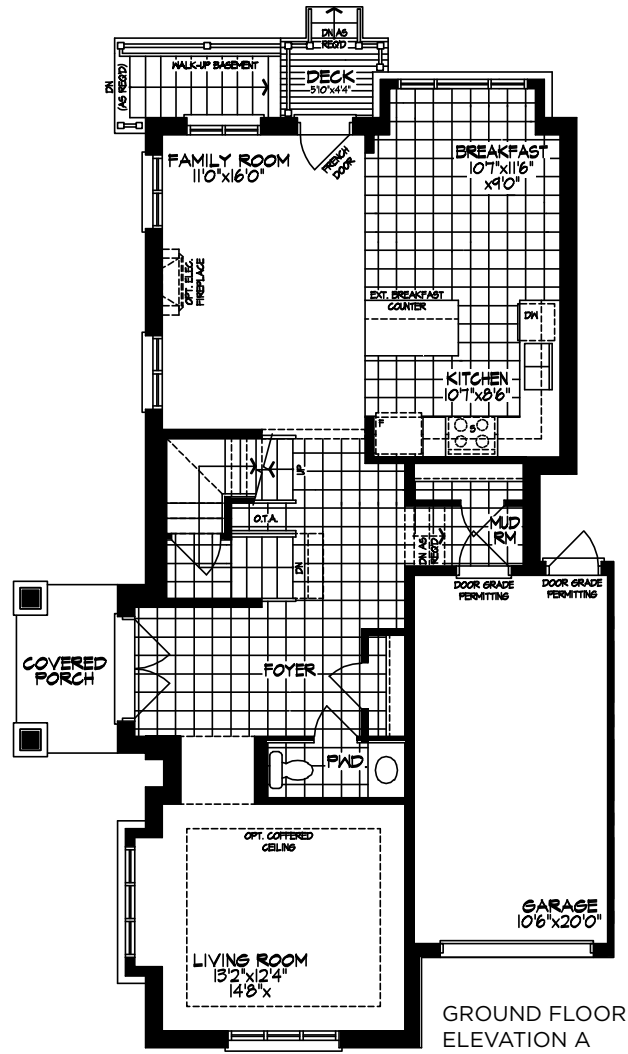
ELEVATION B
2185
SQUARE FEET

THE POPPY (30-04)

ELEVATION A / 2155 SQ. FT.
ELEVATION B / 2185 SQ. FT.

30'
LINKED
DETACHED

INCLUDES 12 SQ. FT.
OF OPEN TO ABOVE



Materials, specifications, and floor plans are subject to change without notice. All renderings are artist conceptions. All floor plans are approximate dimensions. Actual usable floor space may vary from the stated floor area. E. & E.O. Square footage includes 18 sq. ft. of open space. 30-04

